

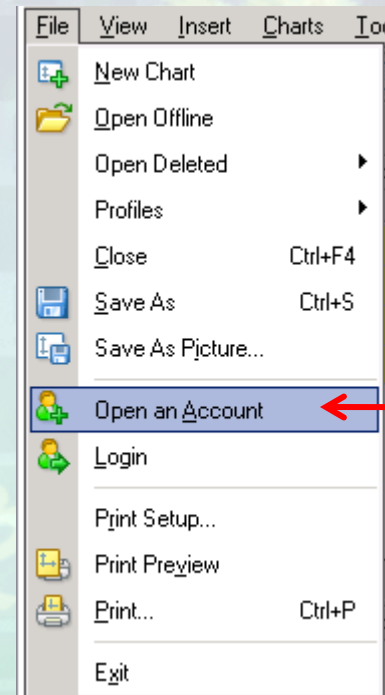


HOW TO

# Setup Phantom Trader(V3.0)

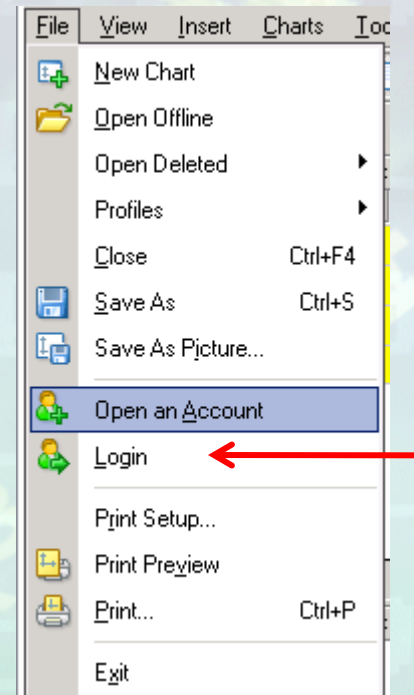
# Opening a Demo Account

- If you are trying Phantom Trader for the first time, please open a demo account.
- To apply for a DEMO account, click on 'File' on the top left corner and select 'Open an Account'. Please select a DEMO account with an initial fund of US\$5000 - US\$10,000.00.
- A popup window will appear to enter your particulars.



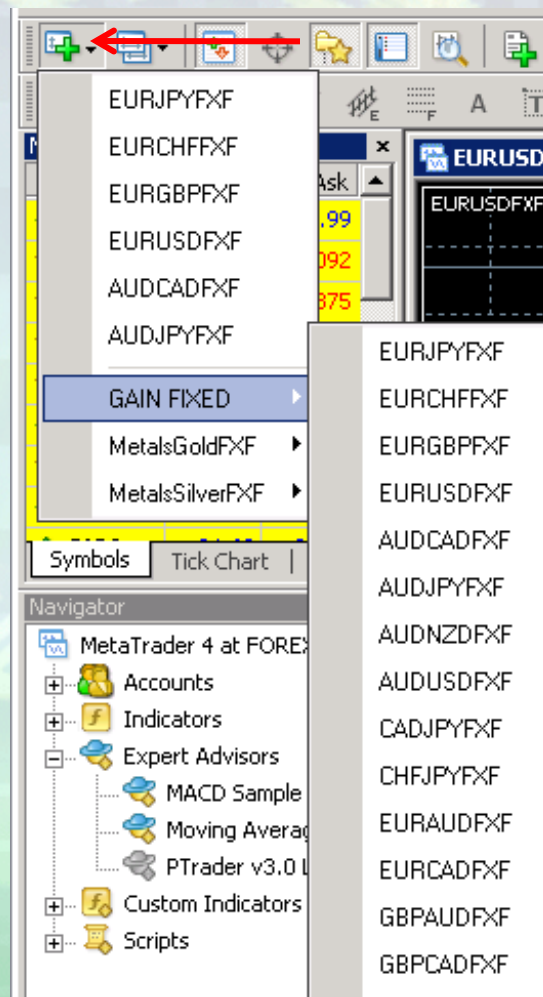
# Login to your Live Account

- If you already have a live account with our brokers, please login to your live account.
- To login to your live account, click on 'File' on the top left corner and select 'Login'.
- A popup window will appear. Enter your Account number, password and choose the correct server address.
- If you are unable to connect to your Account Number, kindly contact your broker to confirm the login details.



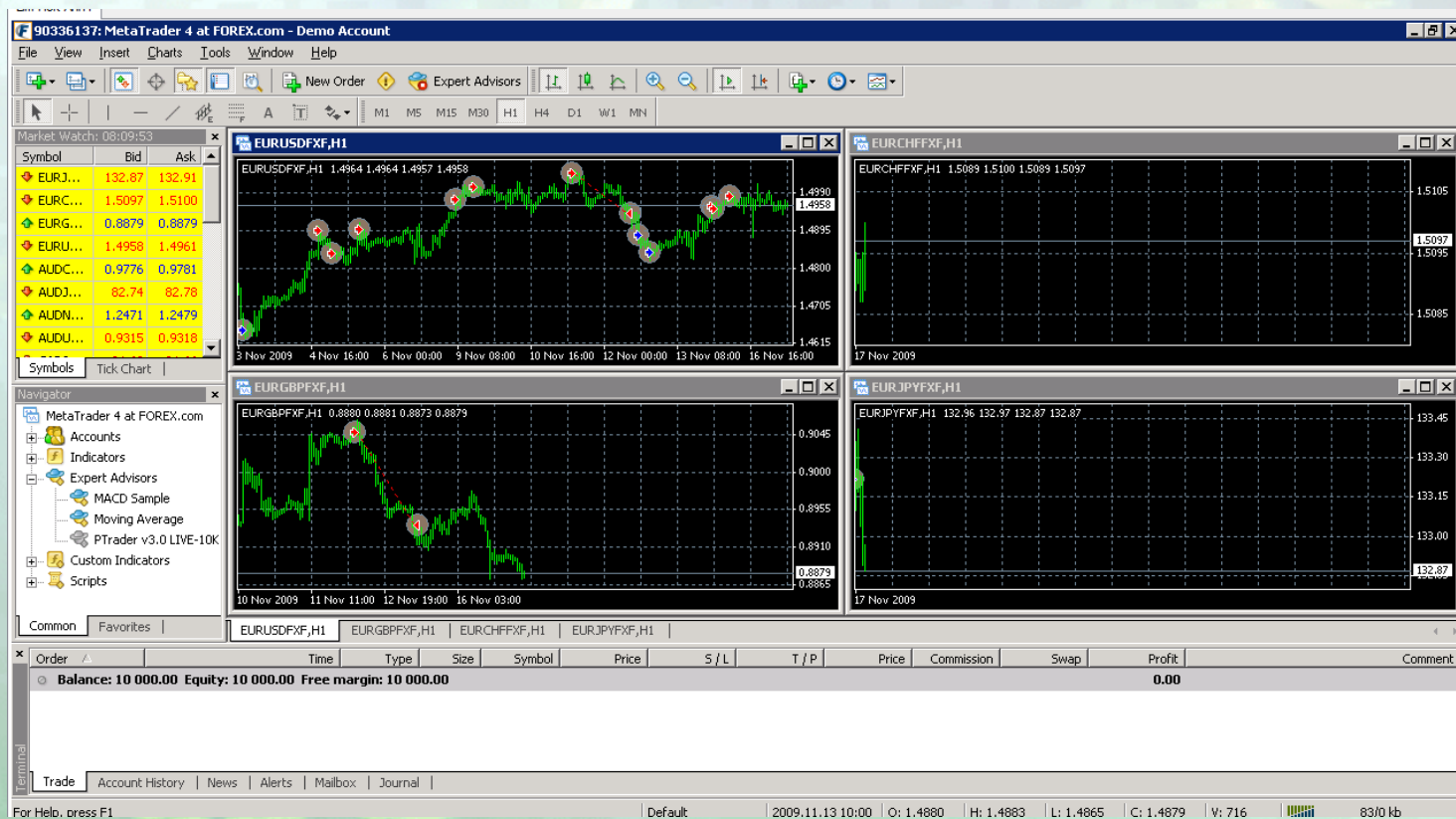
# Setting up of Phantom Trader

- The Phantom Trader (V3.0) Expert Advisor will be pre-installed into the Remote Hosting Service. Expand the “Expert Advisors” list under “Navigator” window and you should be able to find your EA in it.
- Click on the “New Chart” button to open 4 chart windows, i.e. **EURUSD**, **EURCHF**, **EURJPY** & **EURGBP**. Open the “Window” drop-down menu and select “Tile Vertically”.
- Kindly note that the appearance of each broker may be slightly different.



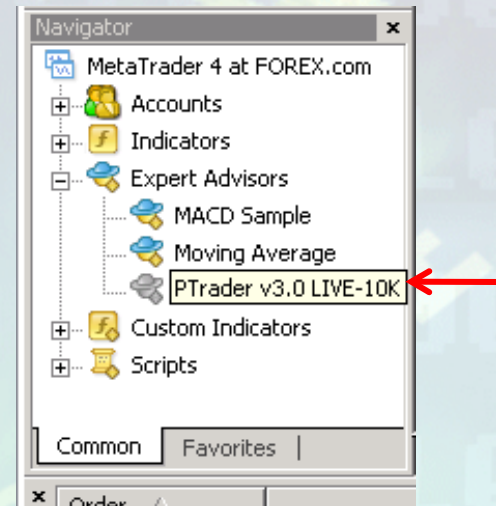
# Setting up of Phantom Trader

- Your MT4 trading platform should look something similar to the image below.



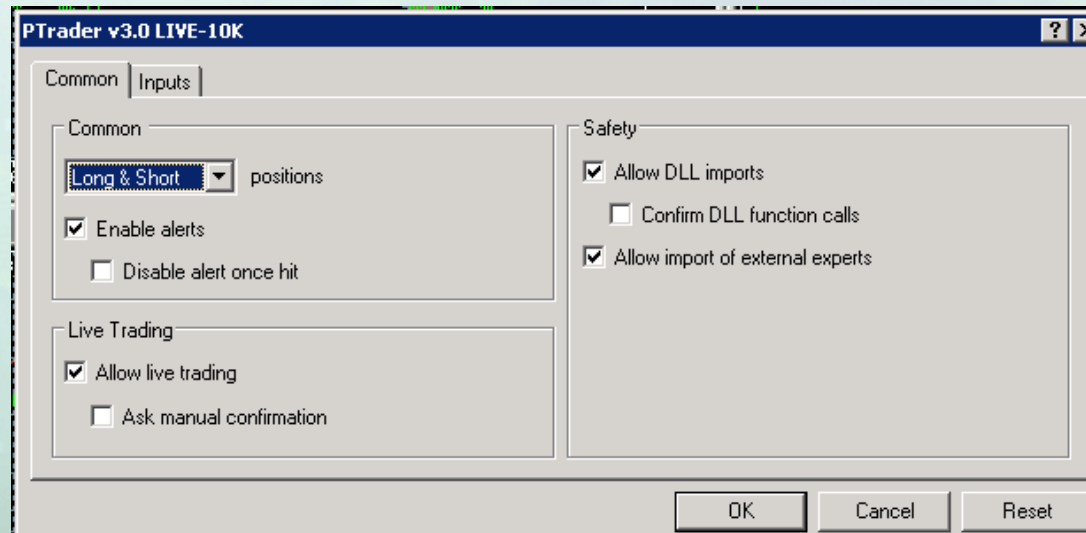
# Setting up of Phantom Trader

- Select your EA from the “Expert Advisors” list and drag it to each of the chart windows. Check the box to allow live trading. (You are required to repeat this action on each of the EA dropped on the chart window).
- After you have dragged the EA to the chart, the End User License Agreement window will appear. Kindly tick on the box and agree.
- After which a popup window will appear to set the parameters for the EA.



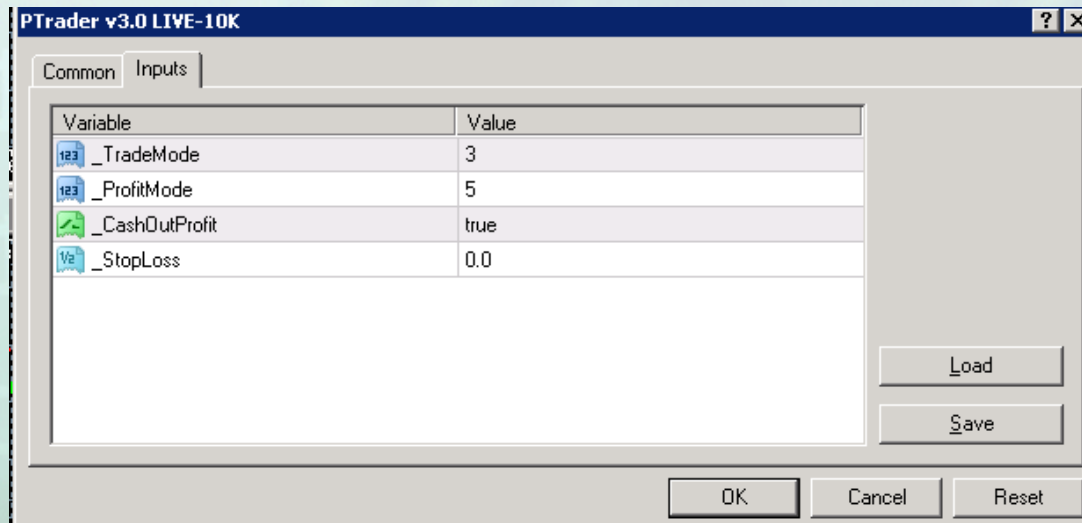
# Setting up of Phantom Trader

- Ensure that the boxes to allow live trading and allow DLL imports are ticked as shown below. It is not necessary to click the box to confirm DLL function calls.



# Setting up of Phantom Trader

- Click on the “Inputs” tab, there are 4 external parameters that you may change.



# Setting up of Phantom Trader

- **Trade Mode** allows you to control how your account is being traded. Adjust it to suit your risk profile, i.e. Mode 1 - Most Conservative, Mode 5 - Most Aggressive. For the same trading signal, higher Trading Mode will enter relatively higher lot size. The default Trading Mode is 3.
- **Profit Mode** = 1 to 10  
Define how much profit the user wants to make from the current set of trades. Please note that higher profit mode also means higher risk of loss. Trading in retail forex is one of the riskiest forms of investment available in the financial markets, the possibility exists that you could sustain a substantial loss of funds and therefore you should not invest money that you cannot afford to lose.”

# Setting up of Phantom Trader

- **\_UseCashOut** is a parameter to determine whether the EA should continue trading or not. By setting it to True, it instructs the EA to stop trading after it has hit its designated profit target. To re-initiate the EA, the user is required to remove all the EAs & re-attach the EAs back to the 4 charts. (**True = Semi-Automated**)
- However, if it is set to False, the EA will automatically reset a new profit target and continue trading set by set. If the user would like the EA to stop trading, he/she can always turn **\_UseCashOut** to True and the EA will then stop after the completion of current set of trades. (**False = Fully-Automated**)
- The last parameter is to set your **\_StopLoss**. For e.g. The last parameter is to set your **\_StopLoss**. For e.g. if you are to set it to 1000, once the floating loss reached US \$1000, the EA will attempt to cut the loss. Remember, stop loss orders can become market orders and may be filled at the prevailing price, which may differ greatly from the desired price.” And you will need to remove and attached the PHANTOM TRADER EA to the 4 charts to start a new set of trades.

# Setting up of Phantom Trader

- Once you have done with the 4 chart windows, you may then click on the “Expert Advisors” button on the top to start your EAs. You should notice a smiley face on the upper right of each chart windows. If you are unable to see the smiley face, it means that you may have forgotten to check on the box to allow live trading.

The screenshot displays the MetaTrader 4 interface for a demo account. The top menu bar includes 'File', 'View', 'Insert', 'Charts', 'Tools', 'Window', and 'Help'. The 'Expert Advisors' button is highlighted with a red arrow. The interface features a Market Watch window on the left, a Navigator window, and four chart windows for EURUSD, EURCHF, EURGBP, and EURJPY. Each chart window shows a candlestick price chart with a 'PTrader v3.0 LIVE:10K' indicator. The bottom status bar shows account information: Balance: 10 000.00, Equity: 10 000.00, Free margin: 10 000.00, and Profit: 0.00.

# Disclaimer

- Trading in the Off Exchange Retail Foreign Currency market is one of the riskiest forms of investment available in the financial markets and suitable for sophisticated individuals and institutions. The possibility exists that you could sustain a substantial loss of funds and therefore you should not invest money that you cannot afford to lose. There is no system or person who can guarantee your success. You implement the methods introduced in this article and/or use this EA at your own risk. The author/owner of this information and/or AlgomationFX Pte Ltd shall not be held liable for your losses of any kind including but not limited to the failure or integrity of any of this software or trading system.